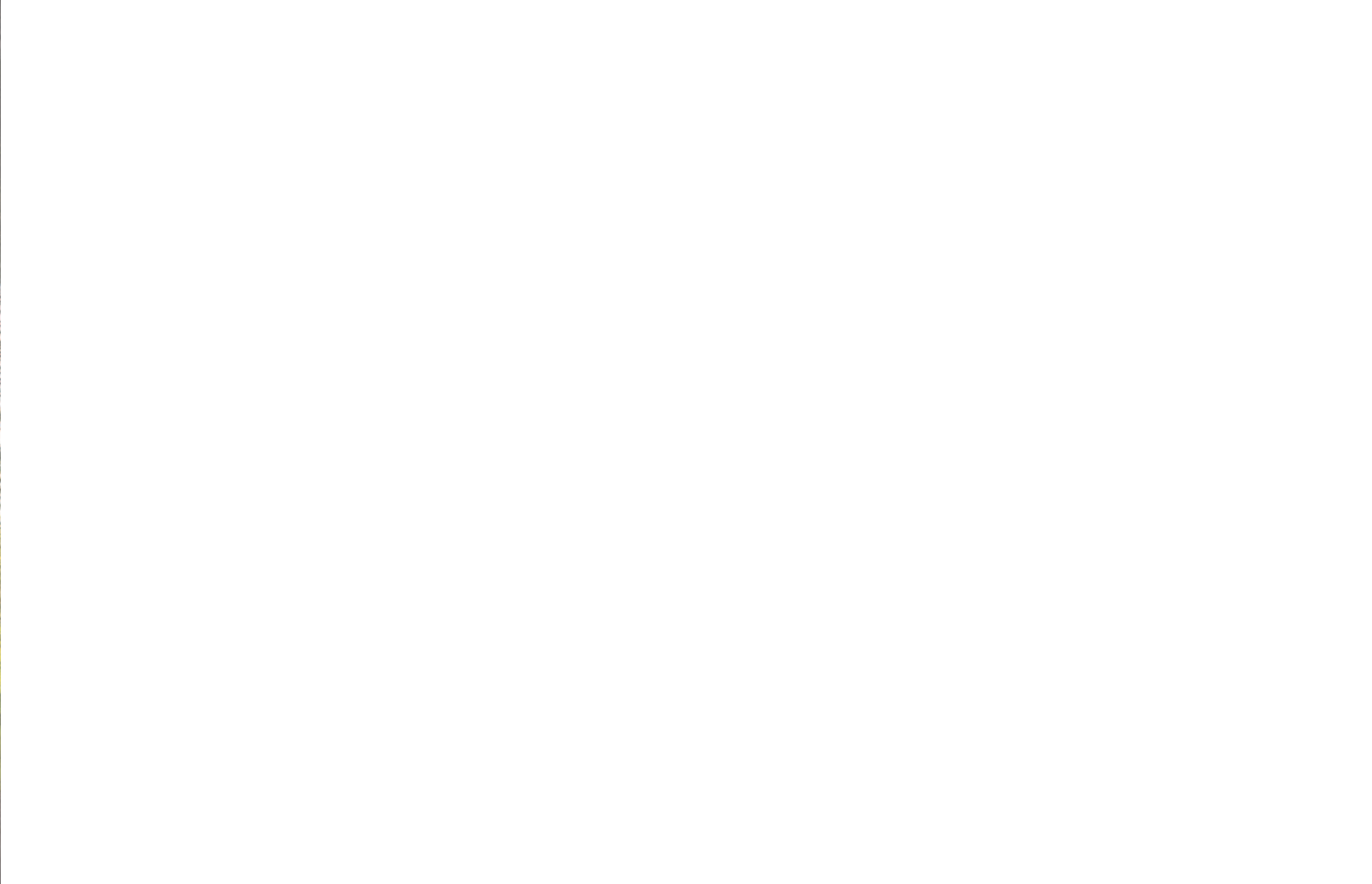


VENTURA
CAMPERVANS



2024 **VR400**





The Difference is Ventura

What makes Ventura different isn't just the hours that go into building each and every one by hand. Nor is it that we give you the option to tailor the design of your campervan just how you want it. It could be the fact we've 35 years of vehicle conversion history and experience under our belts. But to be honest, it's all of these which add up to making the difference.

When you choose a Ventura campervan you will benefit from the difference that sets us apart.



Over 35 years vehicle conversion experience

The business behind Ventura campervans, has been converting vehicles for over 35 years. GM Coachwork are an accredited convertor for the major manufacturers including Ford, VW, Renault, Peugeot and Iveco. With our experience and accreditations you know you're in good hands.



Reshaping the industry with bespoke solutions

We were the first campervan manufacturer to offer bespoke options. With a Ventura campervan you get to choose the finishes for your camper from the furniture and worktops to the flooring and how the seats are trimmed.

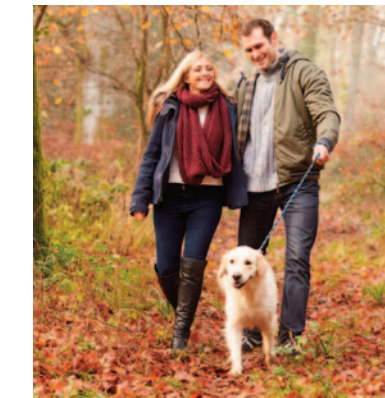


Practical Motorhome Award Winner



Handbuilt by local craftsmen

Every Ventura campervan is built by hand. Our team of dedicated craftsmen ensure every campervan is finished to the same exacting high standards.



Year round usability

The VR400 is a campervan that you really can use all year round. Apart from its high level of insulation contributing to its thermal efficiency features such as the Wallas diesel-fired combined hob and heater keep the cabin warm all year round. Ideal for venturing out in the chillier months.



Caravan & Motorhome Club Design Award

**for life's
adventurers**



PEUGEOT BOXER **VR400**

Get your adventures off to a flying start with the spacious Ventura VR400 campervan. Based on the Peugeot Boxer L2H2 the VR400 is generous in every way.

The compact proportions hide a roomy and well appointed interior. First thing you'll notice is you have over 6ft of headroom - negating the need in a lot of cases for a pop top to add cabin height.

A well appointed interior features everything you need to enjoy your adventures in comfort including a Wallas combined hob and heater, sink, a drawer fridge and a microwave. Storage is never an issue with plenty of space to keep your travel essentials.

Choose from 3 models - **VR400, Plus** and **Touring** all designed to bring your adventures to life.



VR400 Key Features

Wired Campers™ touch screen control panel



Every VR400 is fitted with a touch screen control panel which centralises all the vehicles appliances into one screen. From here you can control the lighting, monitor battery condition, fresh and waste water levels and much more.

Wallas™ diesel-fired hob and heater



The Wallas diesel-fired hob and heater is fitted as standard saving space with its dual function. The Wallas is perfect for cooking and keeping warm in your off-grid adventures.

Over 6ft of living area headroom



Every VR400 comes with over 6ft of headroom removing the need, for a lot of people, for a pop top to add extra height

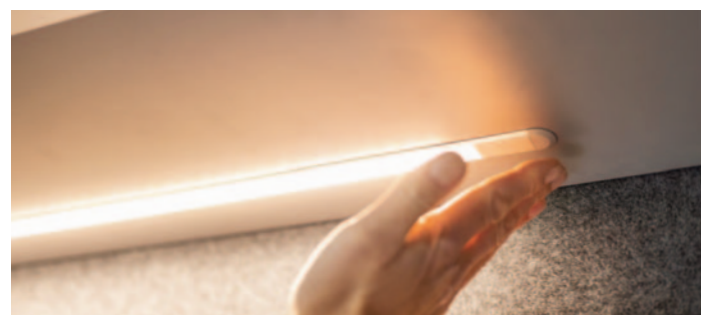
3 layouts to choose from

- VR400, Plus and Touring
- 2 - 4 berths
- 3500kg GVW
- Drive on a standard driving licence

Bespoke options



As with every Ventura your new VR400 is entirely customisable. Choose your workstops, cabinet finish, flooring and a lot more. Design your campervan the way you want it.



VR400

Key Features

Peugeot Boxer Professional van

Peugeot Boxer L2 H2, Blue HDi 140bhp 2.2 litre engine with 6-speed manual gearbox.

Fully equipped kitchen

Complete with a Wallas diesel-fired combined two-burner hob and heater, drawer-style fridge and sink.

Spacious living area

Generous living area with over 6ft of headroom, angled triple seat bench for enhanced comfort, fold-away table, Fabworx 6ft x 4'3" double bed on rails, USB ports, wireless phone charger and LED downlighting.

Driver cabin

High level of standard equipment including 7" colour display, DAB radio with Apple Carplay/Android Auto, USB and Bluetooth, air-conditioning and cruise control.

Matching front and rear seats

Retrimmed front and rear seats in matching trim.

Swivelling seat

Passenger seat swivelling as standard.

Control Panels

Wired Campers™ touchscreen control system for all vehicle appliances.

See page 10 for the full list of standard equipment





VR400 PLUS

Key Features

Everything in the VR400 and:

- Roof bed, pop top and ladder
- Elevating roof
- Manual side door step
- Rear reversing camera
- Mains hook up
- Dometic microwave oven



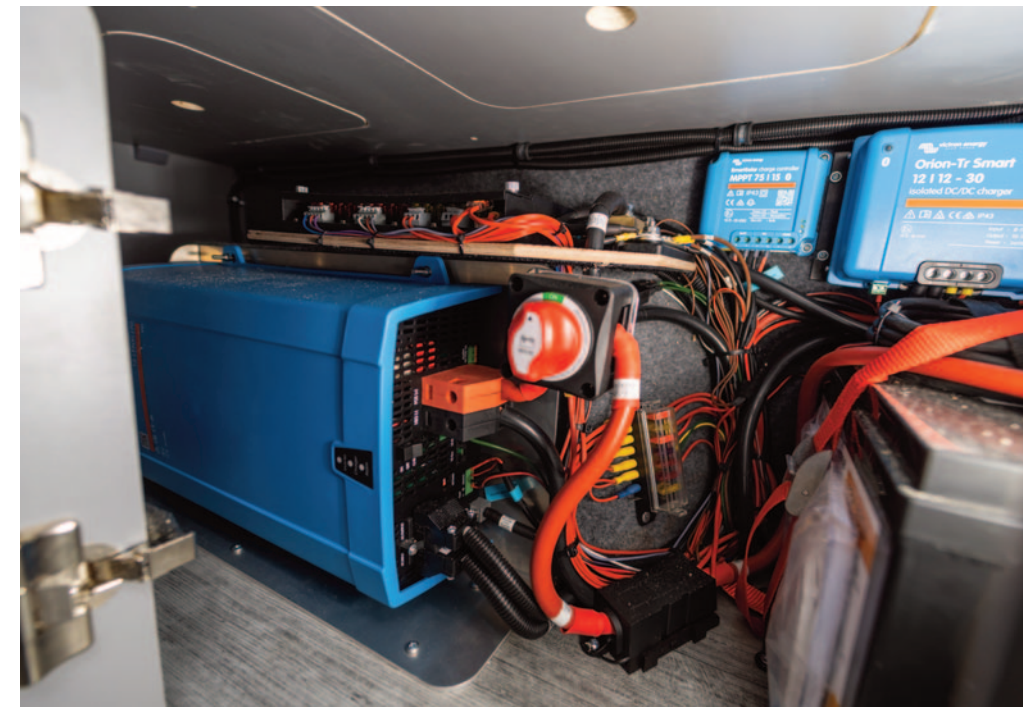


VR400 TOURING

Key Features

Everything in the VR400 Plus, and

- Underslung water tanks
- Portable toilet
- Windscreen and passenger window blinds
- Inverter and lithium battery
- Solar panels
- Alloy wheels



STANDARD EQUIPMENT

All 3 models come with the following fitted as standard.

6ft x 4'3" Fabworx double bed on rails
Wallas diesel hob and heater
Stainless steel sink
Drawer fridge
Swivelling passenger seat
USB ports in rear living area
Fold-away table
LED downlighting & strip lighting
Overhead storage units
Fire extinguisher
Carbon monoxide detector
Altro non-slip flooring
Flyscreens and blinds
Fresh water storage
Waste water tank
Wireless phone charger in rear living area
5 x opening windows in living area
Touch screen master control panel

Optional Extras on all models

In-vehicle WiFi
Front cabin carpet mat
Bike rack
Towbar and electrics
Drive-away inflatable awning
Fiamma awning
Roof mounted solar panels
Alloy wheels
Lithium leisure battery
Vehicle tracking system
Solar panels

For vehicle specification, see page 23 & 24

VR400

VR400 PLUS

VR400 TOURING

	VR400	VR400 PLUS	VR400 TOURING
Roof bed, mattress, ladder and light	○	✓	✓
Elevating roof	○	✓	✓
Manual side door step	○	✓	✓
Rear reversing camera	○	✓	✓
Mains hook up	○	✓	✓
Microwave oven	○	✓	✓
Underslung water tanks	○	○	✓
Portable toilet	○	○	✓
Windscreen blinds	○	○	✓
Inverter & lithium battery	○	○	✓
Solar panels	○	○	✓
Alloy wheels	○	○	✓

✓ - Standard Equipment

○ - Optional Equipment

TREK PACK

Give your VR400 that rugged off-grid look with our exclusive TREK pack. Available on any VR400 model

- Fiamma awning
- Roof mounted LED light bar with spotlights
- All-terrain wheels and tyres
- Rear door mounted roof ladder
- Roof bars



Standard Equipment

Comfort

- _____ Air conditioning
- _____ Cruise control
- _____ Rear parking sensors
- _____ Front electric windows
- _____ Electric door mirrors
- _____ Satellite navigation
- _____ Full size spare wheel
- _____ Reach adjustable steering wheel

Safety

- _____ Alarm
- _____ ESC with Hill Start Assist
- _____ ABS braking
- _____ Remote central locking
- _____ Driver airbag
- _____ Daytime running lights

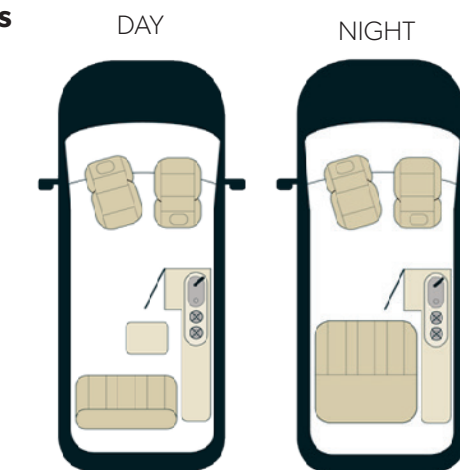
Seating

- _____ Drivers set with height, rake, reach and lumbar adjustment
- _____ Drivers seat armrest

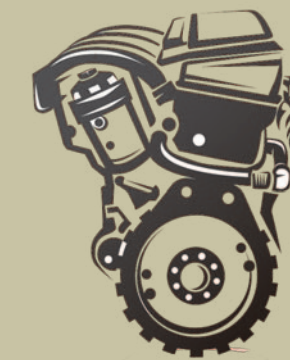
Technology

- _____ 7" colour touchscreen with Apple Car Play, Android Auto, DAB radio, integrated satellite navigation, Bluetooth handsfree, USB socket and steering wheel mounted controls
- _____ Rear reversing camera

Layouts



Engine



Blue HDi 140 Stop Start 6 speed manual

Capacity	2179
Cylinders/Valves	4/16
Max power	140 bhp@3750rpm
Max torque	250 lb.ft@1750rpm
Gears	6
Combined MPG	25.5-36.0

SPECIFICATION

Peugeot Boxer 335 Professional, L2 H2, Blue HDi 140, 6 spd manual

Dimensions

Length 5413mm

Width (mirrors folded) 2050mm

Width (mirrors extended) 2508mm

Height 2522mm

Height with pop top 2725mm

Weights

GVW 3500kg

Tank Sizes

Fresh Water 23 Litres

Waste Water 23 Litres

Bed Sizes

Double 6' x 4'3"

Roof bed 6'3" x 2'4"

Roof bed weight capacity 200kgs

COLOURS



Cumulus Grey



Ice White



Iron Grey



Graphite Grey



Thunder Grey



Volcano Red

Colours shown are subject to change at the discretion of the manufacturer



PRICES

	VR400	VR400 PLUS	VR400 TOURING
Roof bed, mattress, ladder and light	○	✓	✓
Elevating roof	○	✓	✓
Manual side door step	○	✓	✓
Rear reversing camera	○	✓	✓
Mains hook up	○	✓	✓
Dometic microwave oven	○	✓	✓
Underslung water tanks	○	○	✓
Portable toilet	○	○	✓
Windscreen blinds	○	○	✓
Inverter & lithium battery	○	○	✓
On The Road	£51,995	£61,995	£66,995 £59,995 (without elevating roof)

✓ - Standard Equipment
○ - Optional Equipment

Standard Equipment

6ft x 4'3" Fabworx double bed on rails
Stainless steel sink
Drawer fridge
Swivelling passenger seat
USB ports in rear living area
Fold-away table
LED downlighting & strip lighting
Overhead storage units
Fire extinguisher
Carbon monoxide detector

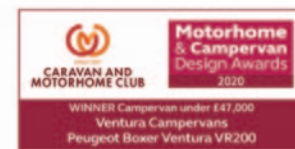
Altro non-slip flooring
Flyscreens and blinds
Fresh & waste water storage
Wireless phone charger in rear living area
5 x opening windows in living area
Touch screen master control panel
Wallas diesel-fired combined two-burner hob and heater
Angled triple seat bench for enhanced comfort
Wireless phone charger

Height adjustable drivers seat
Electric windows
7" colour display
DAB radio with Apple Carplay/Android AutoUSB and Bluetooth handsfree
Air-conditioning
Cruise control
Sat nav
Steering wheel mounted controls
Retrimmed front and rear seats in matching trim



YOU'RE IN GOOD HANDS

Ventura is a division of GM Coachwork, the market-leading vehicle conversion specialists. Established for over 35 years GM Coachwork is an accredited vehicle convertor for major manufacturers including Ford, VW, Peugeot, Renault and Vauxhall. Quality runs through the business as illustrated by our three ISO accreditations. When you choose a multi-award winning Ventura campervan you can be rest assured you're in good hands.



Approved by the VCA

The Ventura campervan is a type approved conversion having achieved IVA Type Approval status from the VCA.



3 Year Warranty

Every Ventura campervan comes with a 3 year conversion warranty in addition to the vehicle manufacturers warranty.

